

Fuzzy Logic Models



Presented by Matt Keene
& Chris Metzner



“How did you know
when you needed a
graphic designer?”



Paint Product Stewardship Initiative (PPSI)

Government

Manufacturers

Non-Profit
Organizations

RETAILERS

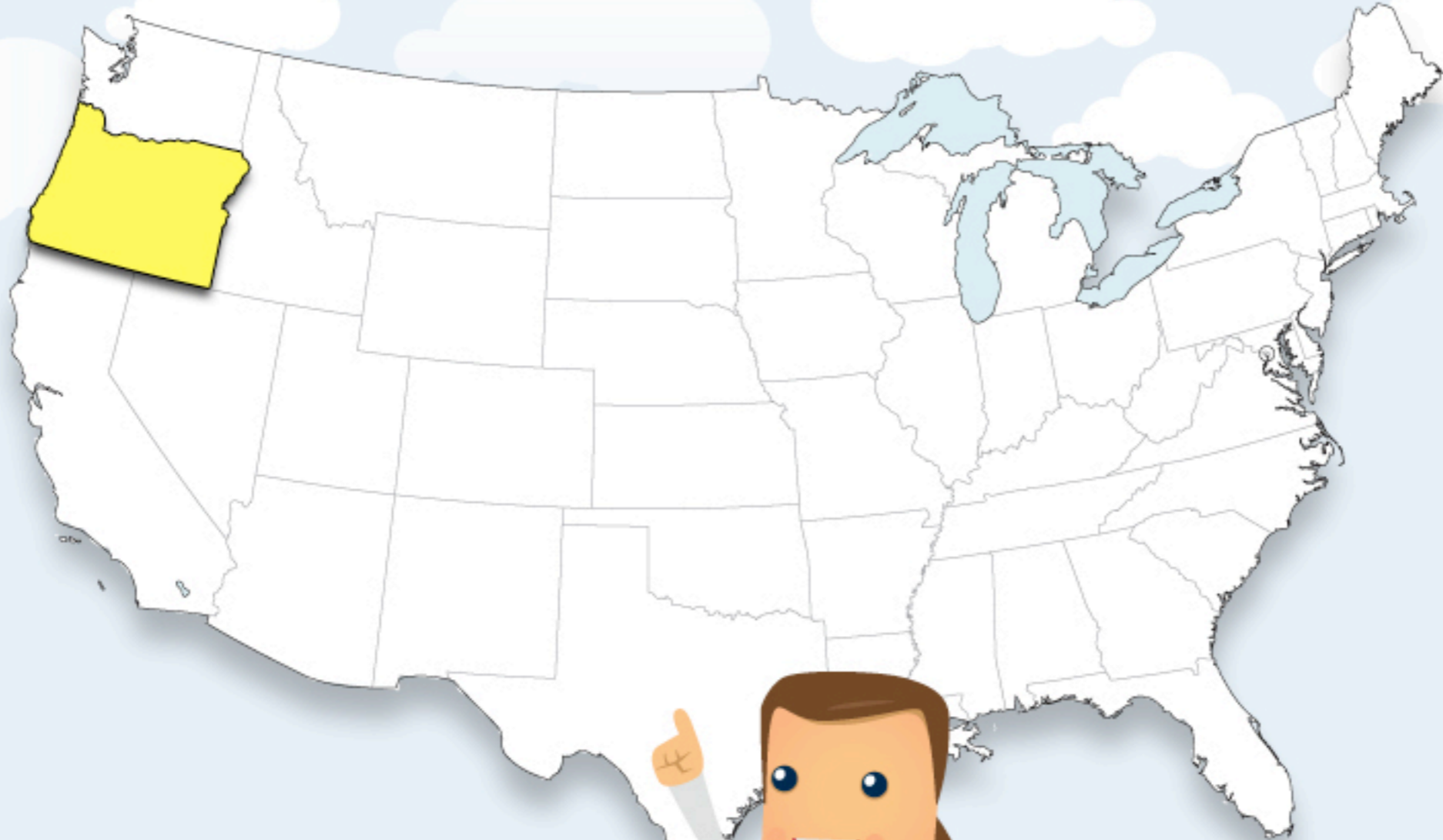
100's of Participants
Nationwide



Principles







Goals

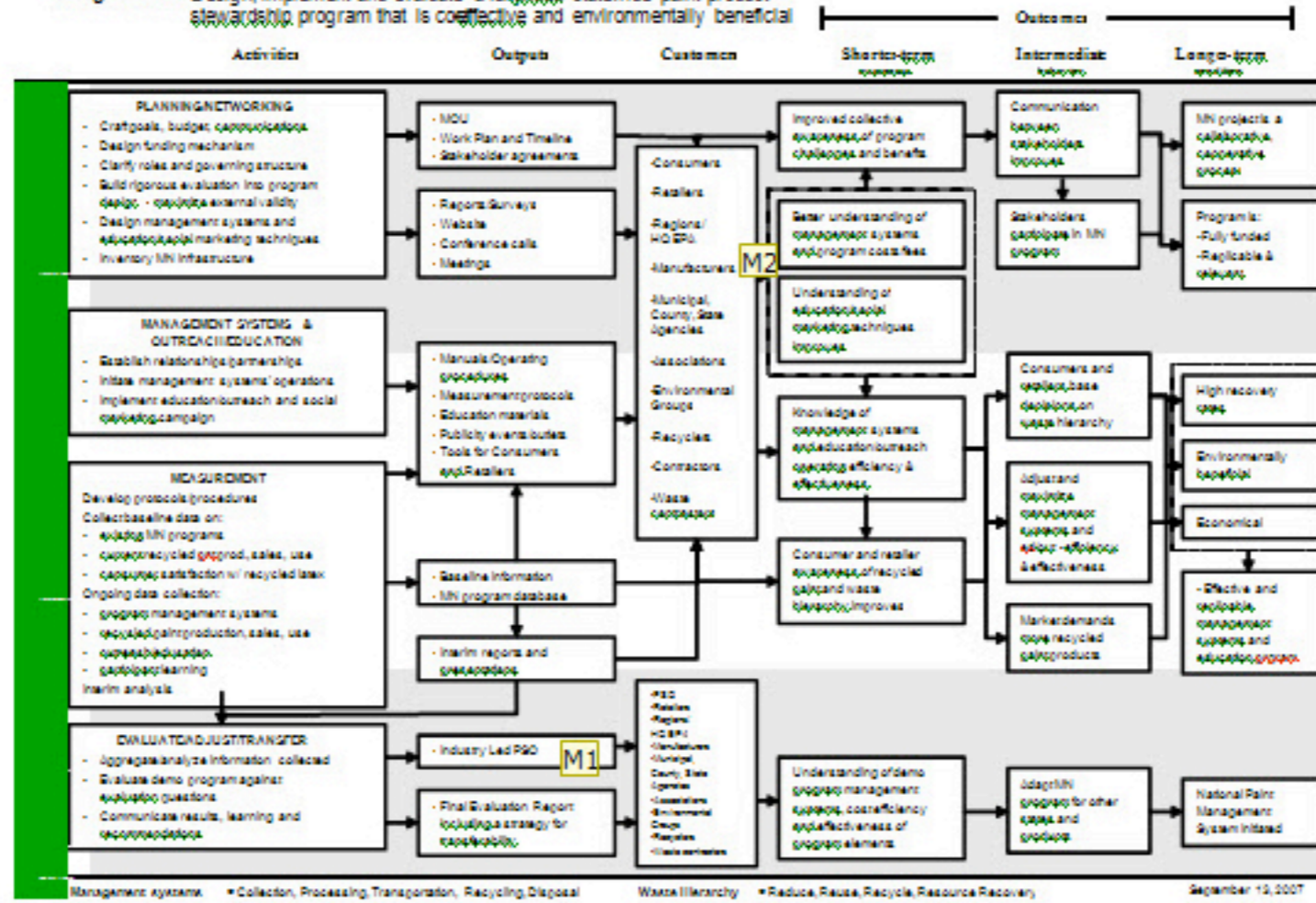


Evaluation Committee



PPSI Demonstration Program

Program Goal: Design, Implement and evaluate a fully funded statewide paint product stewardship program that is cost-effective and environmentally beneficial

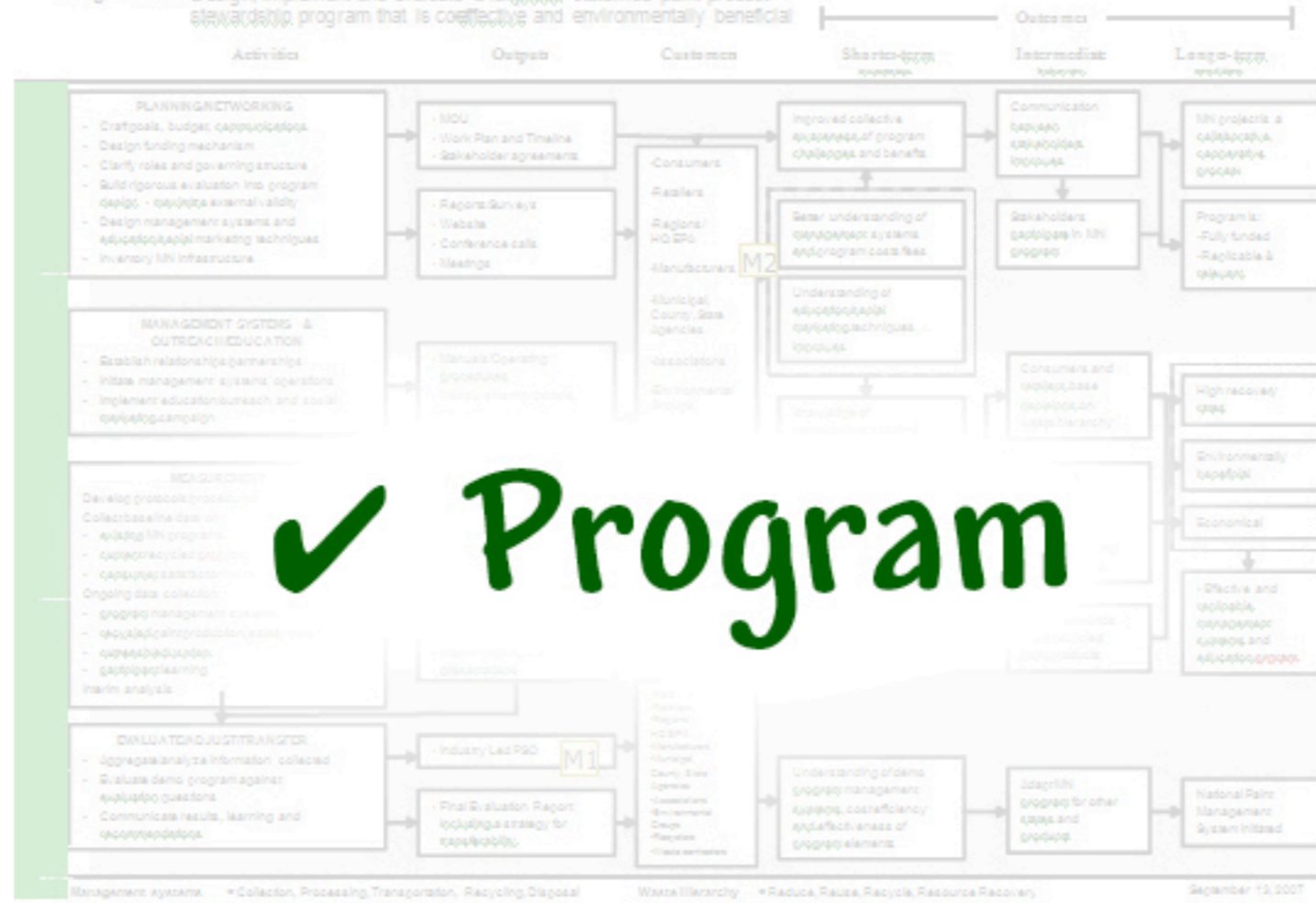


Management systems: * Collection, Processing, Transportation, Recycling, Disposal Waste Hierarchy: * Reduce, Reuse, Recycle, Resource Recovery September 13, 2007



PPSI Demonstration Program

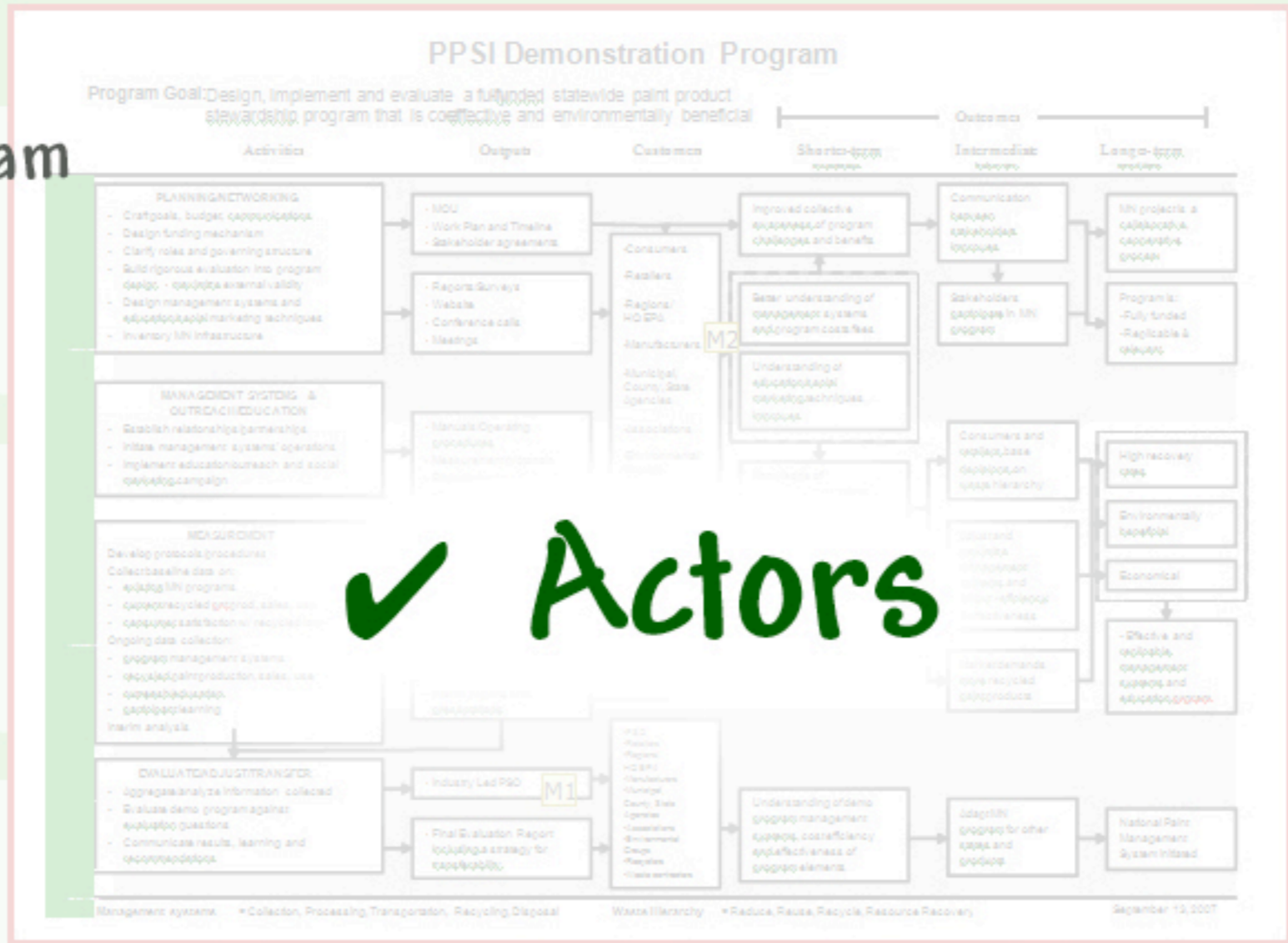
Program Goal: Design, implement and evaluate a fully funded statewide paint product stewardship program that is cost-effective and environmentally beneficial



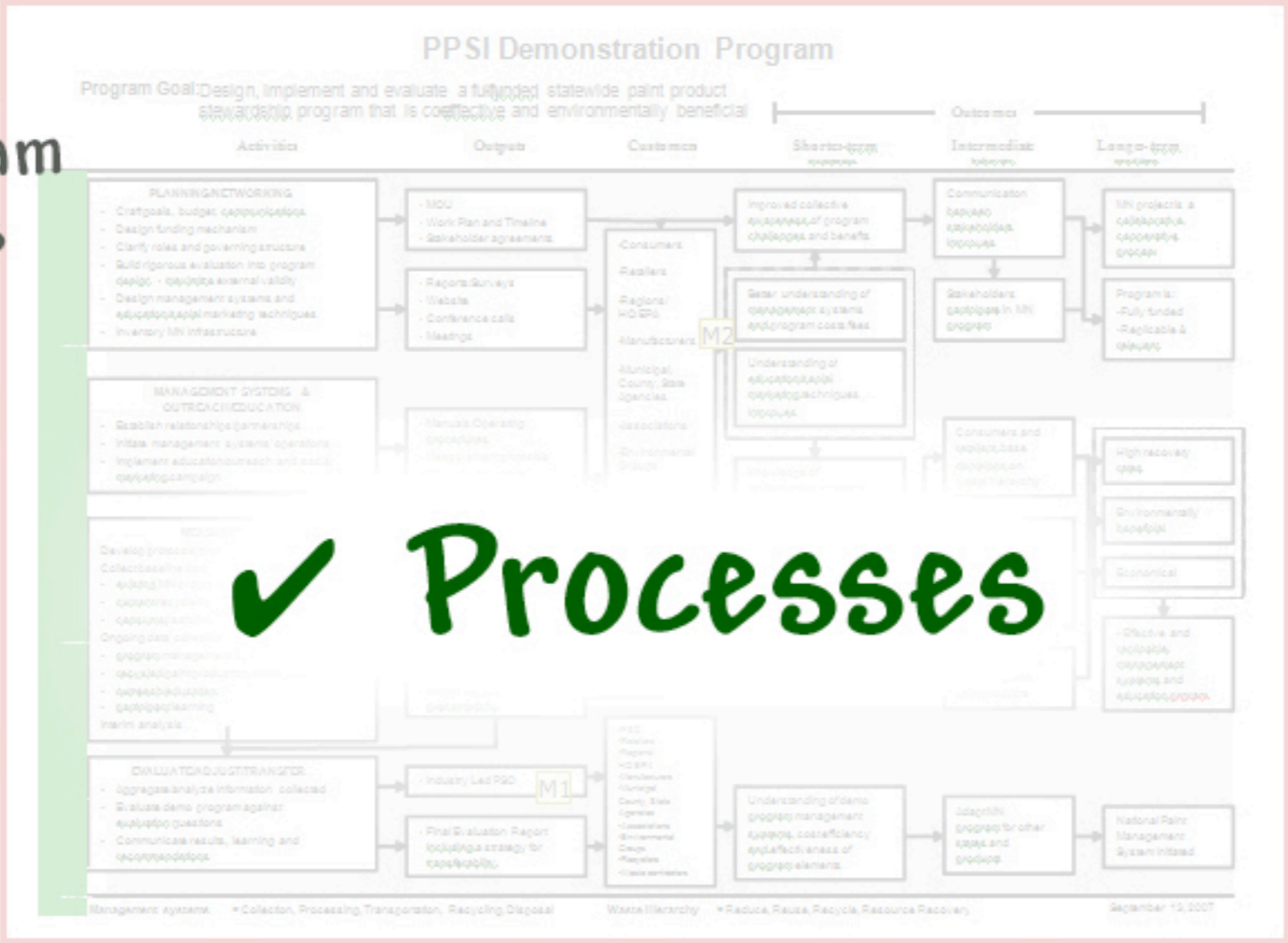
✓ Program



✓ Program



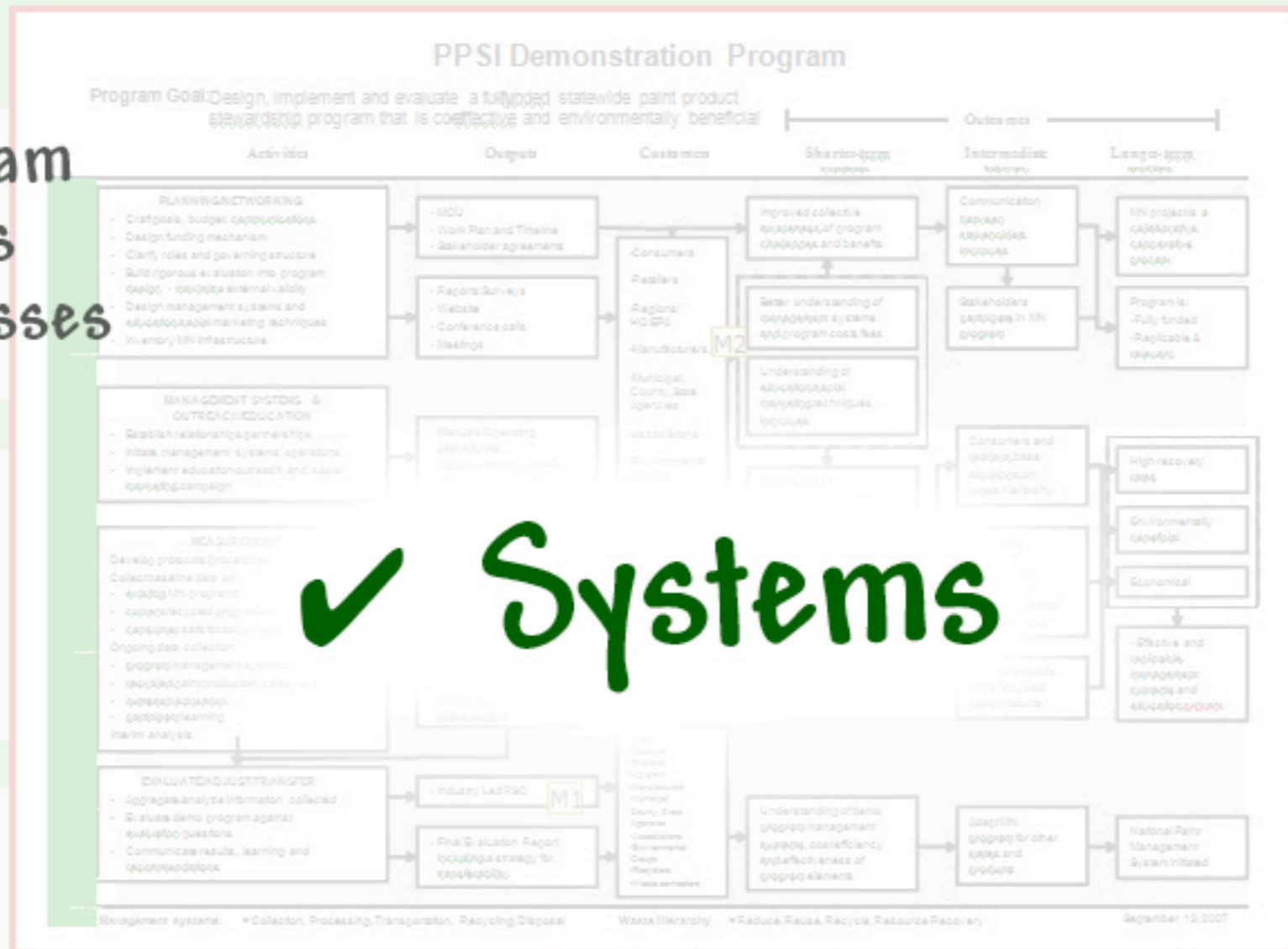
✓ Program
✓ Actors



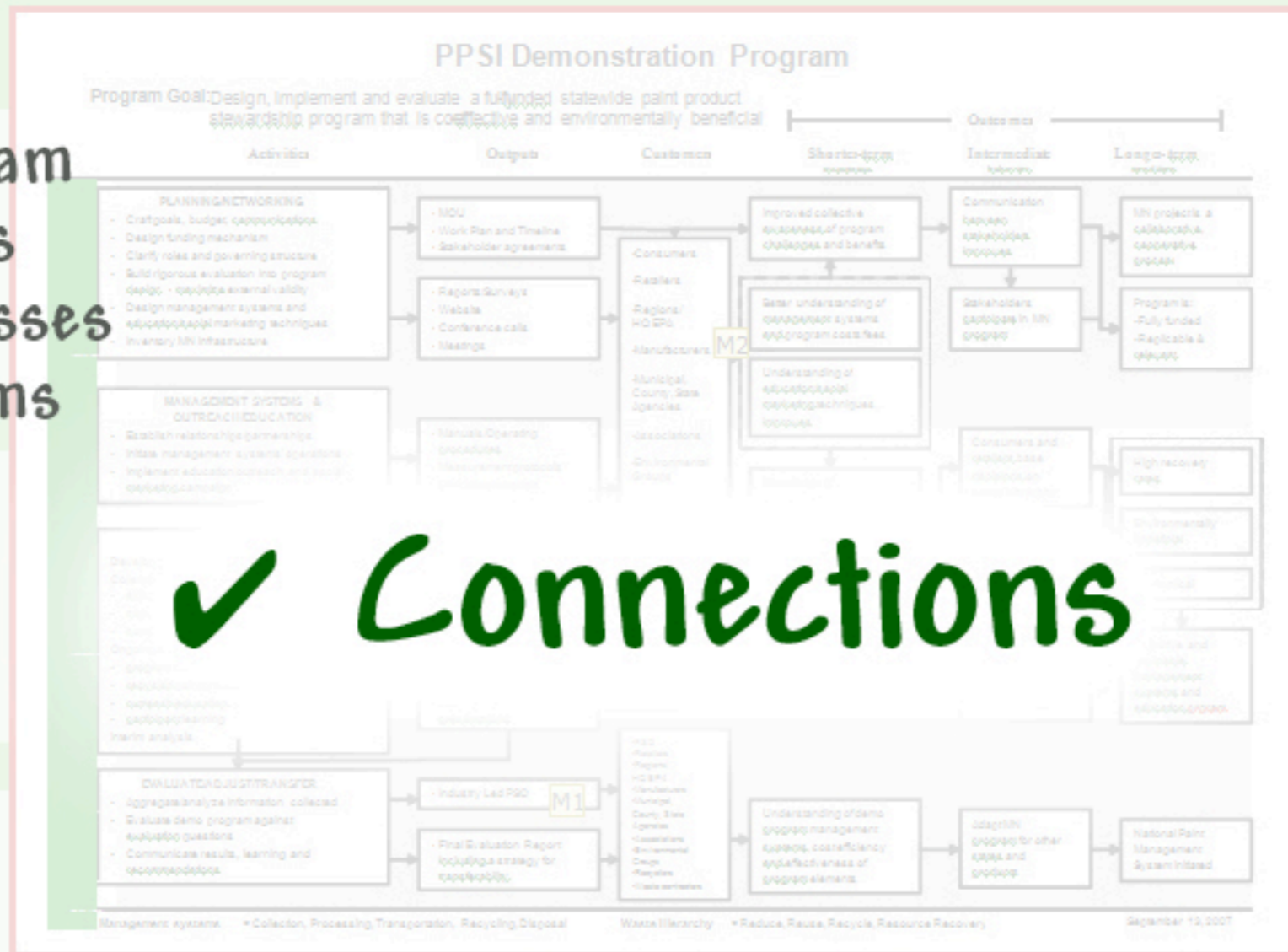
✓ Processes



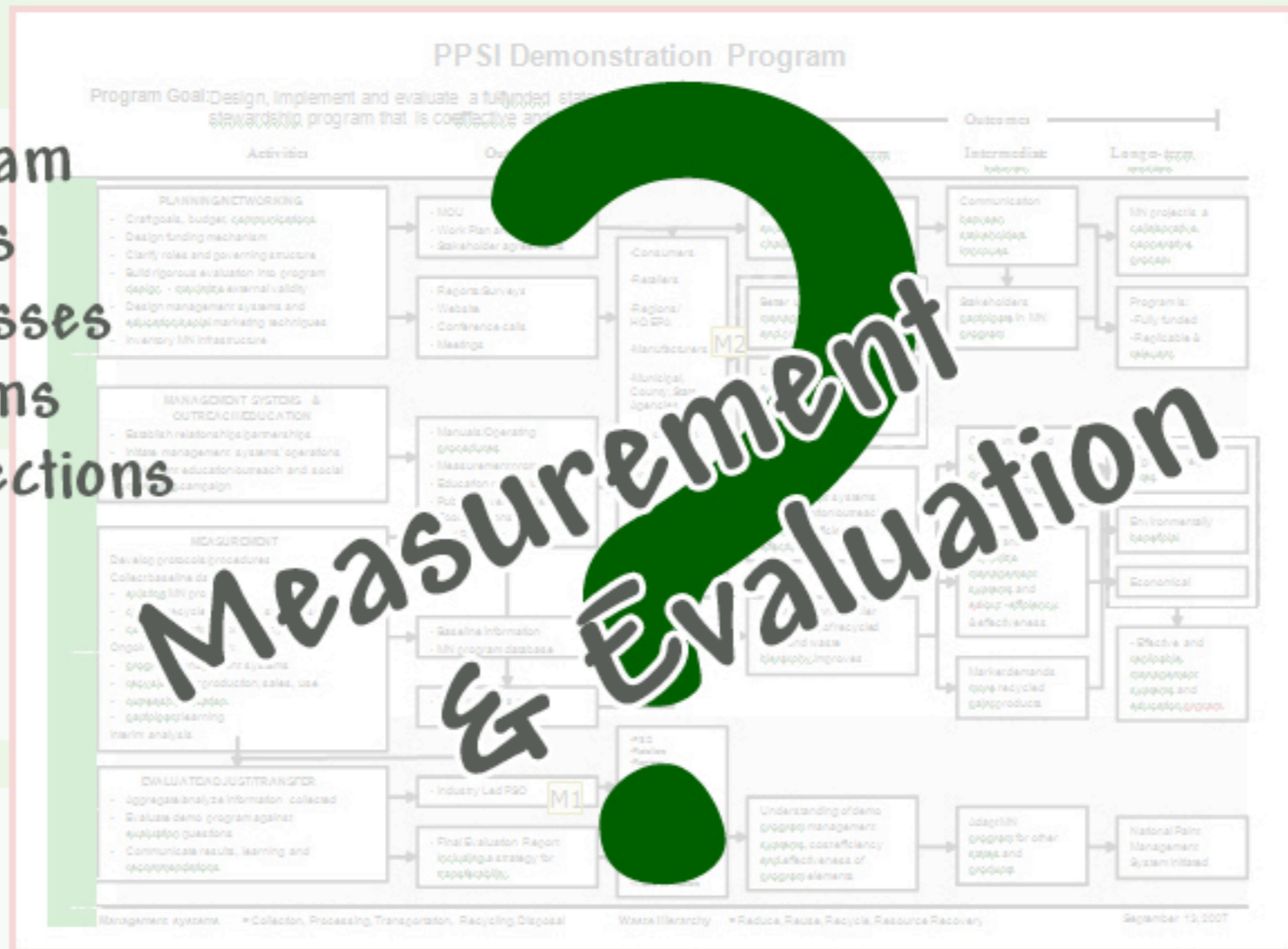
- ✓ Program
- ✓ Actors
- ✓ Processes



- ✓ Program
- ✓ Actors
- ✓ Processes
- ✓ Systems



- ✓ Program
- ✓ Actors
- ✓ Processes
- ✓ Systems
- ✓ Connections



Parental Guidance





From static to adaptive



✓ Actors involved



✓ Actors involved

✓ Processes



✓ Actors involved

✓ Processes

✓ Products



- ✓ Actors involved
- ✓ Processes
- ✓ Products

✓ Information



- ✓ Actors involved
- ✓ Processes
- ✓ Products
- ✓ Information

✓ Goals



- ✓ Actors involved
- ✓ Processes
- ✓ Products
- ✓ Information
- ✓ Goals

✓ Systems

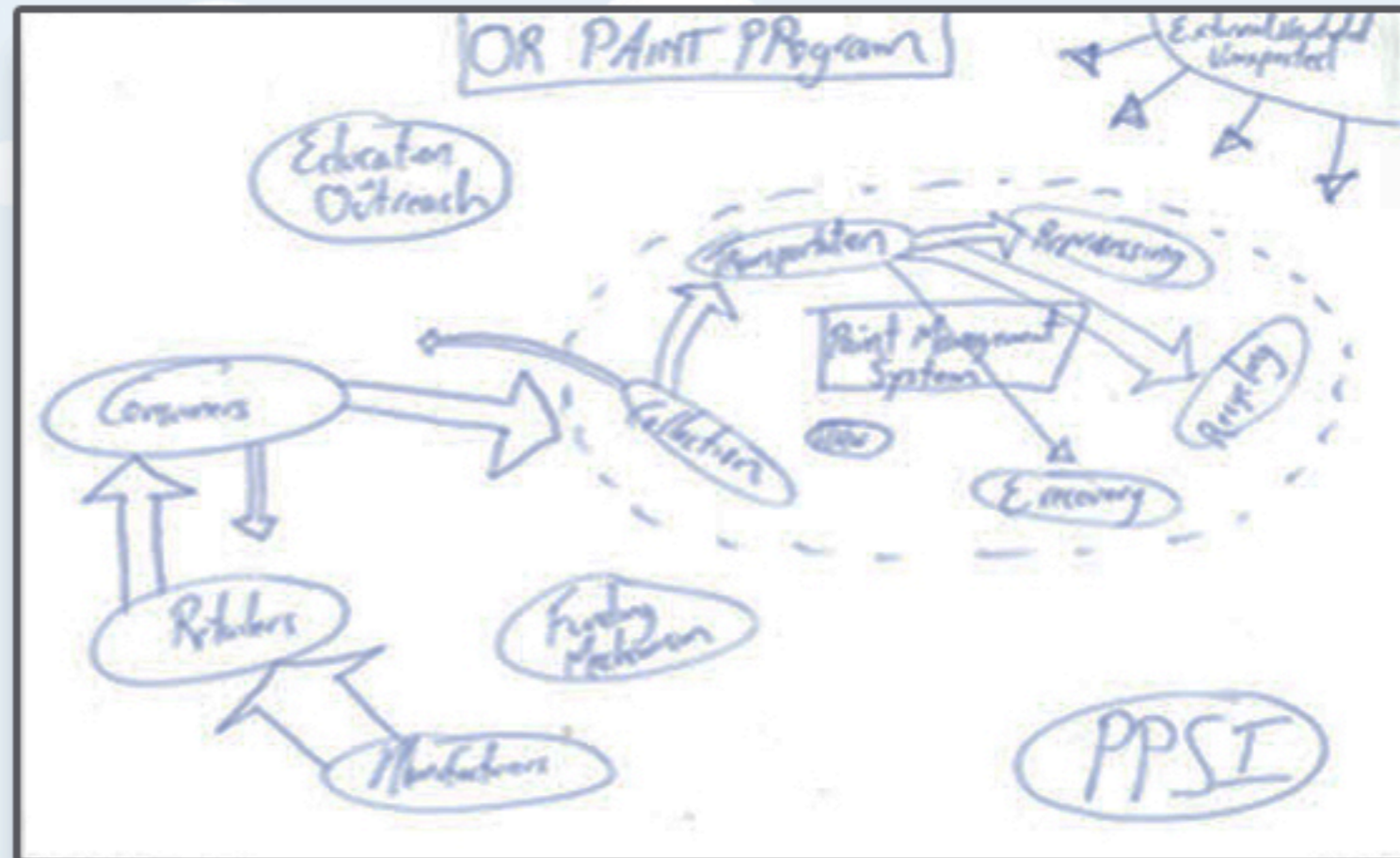


- ✓ Actors involved
- ✓ Processes
- ✓ Products
- ✓ Information
- ✓ Goals
- ✓ Systems

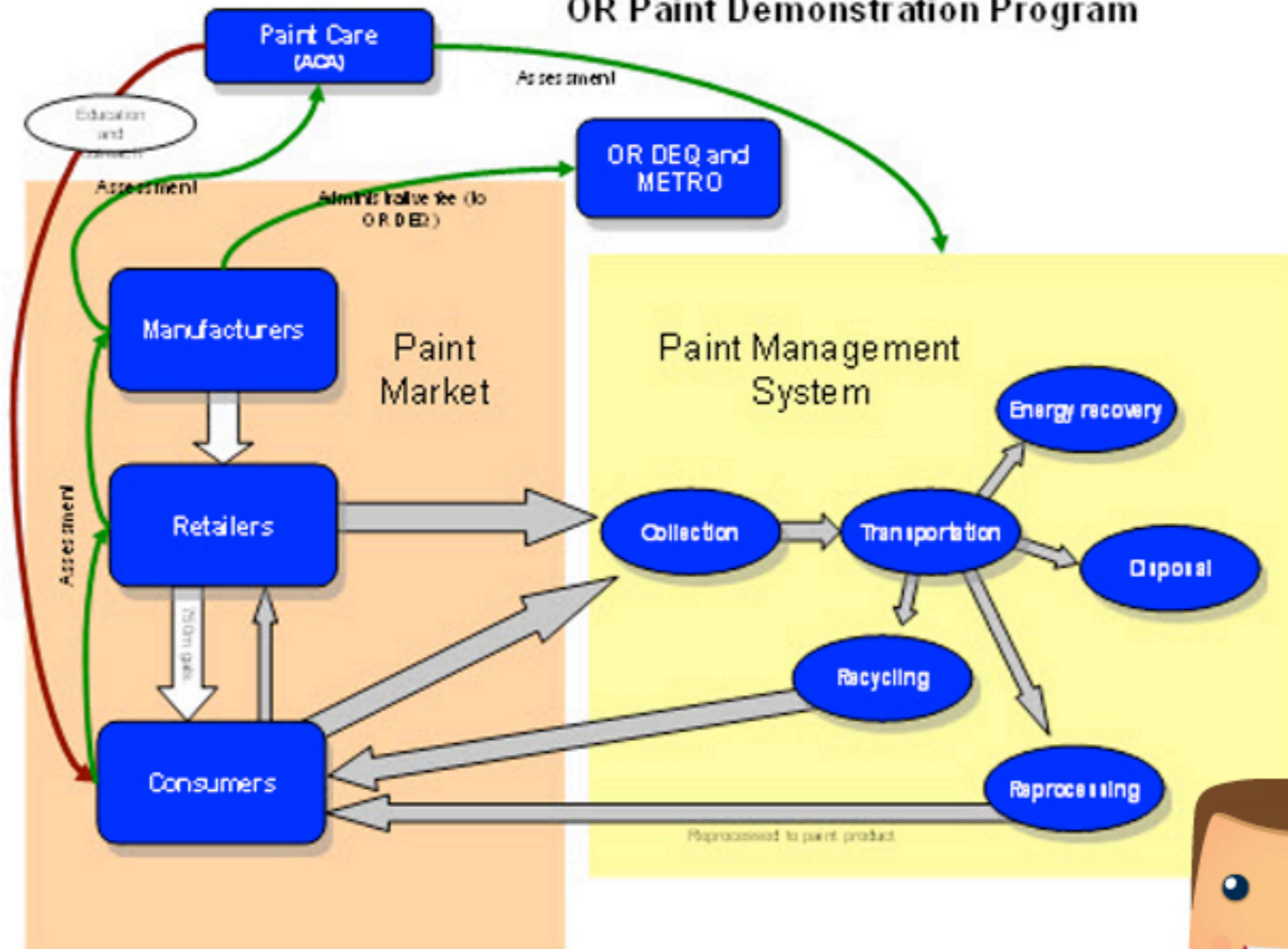
✓ **Connections**



- ✓ Actors involved
- ✓ Processes
- ✓ Products
- ✓ Information
- ✓ Goals
- ✓ Systems
- ✓ Connections

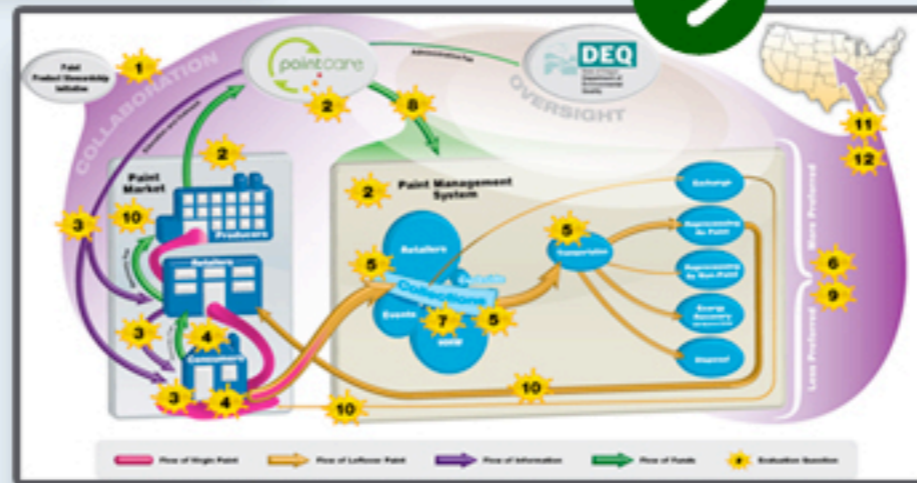
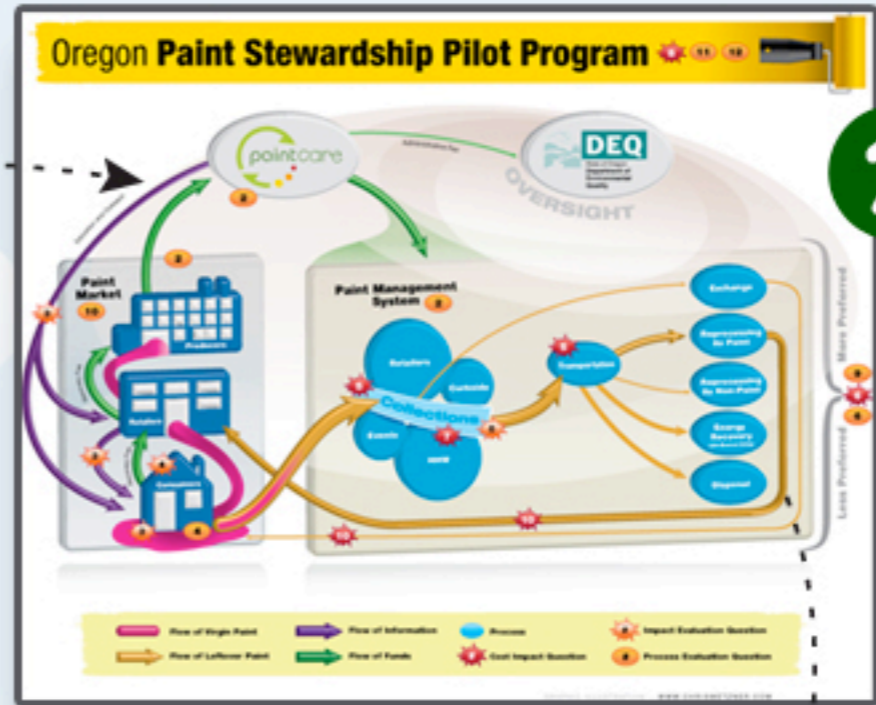
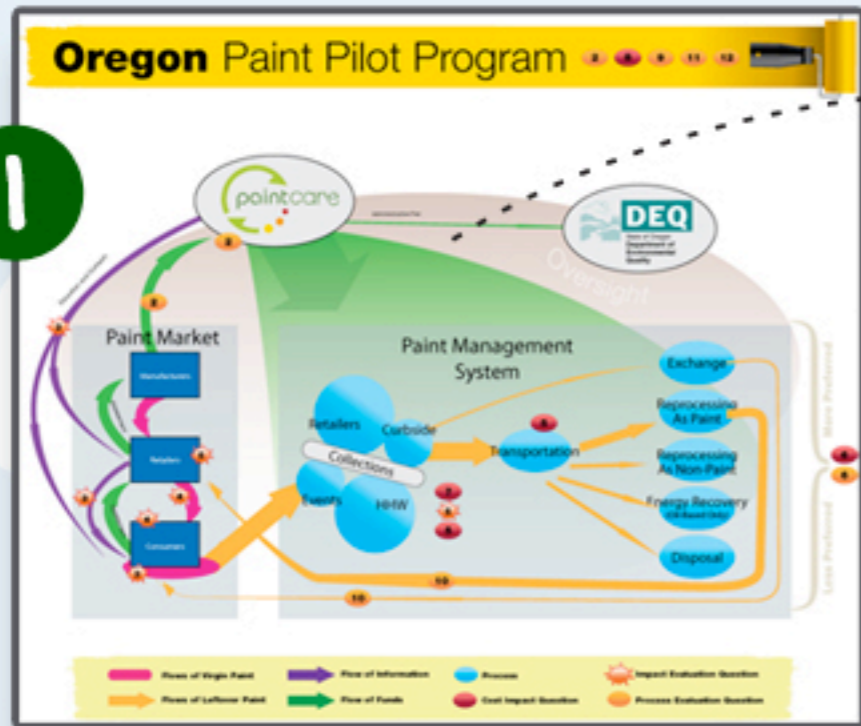


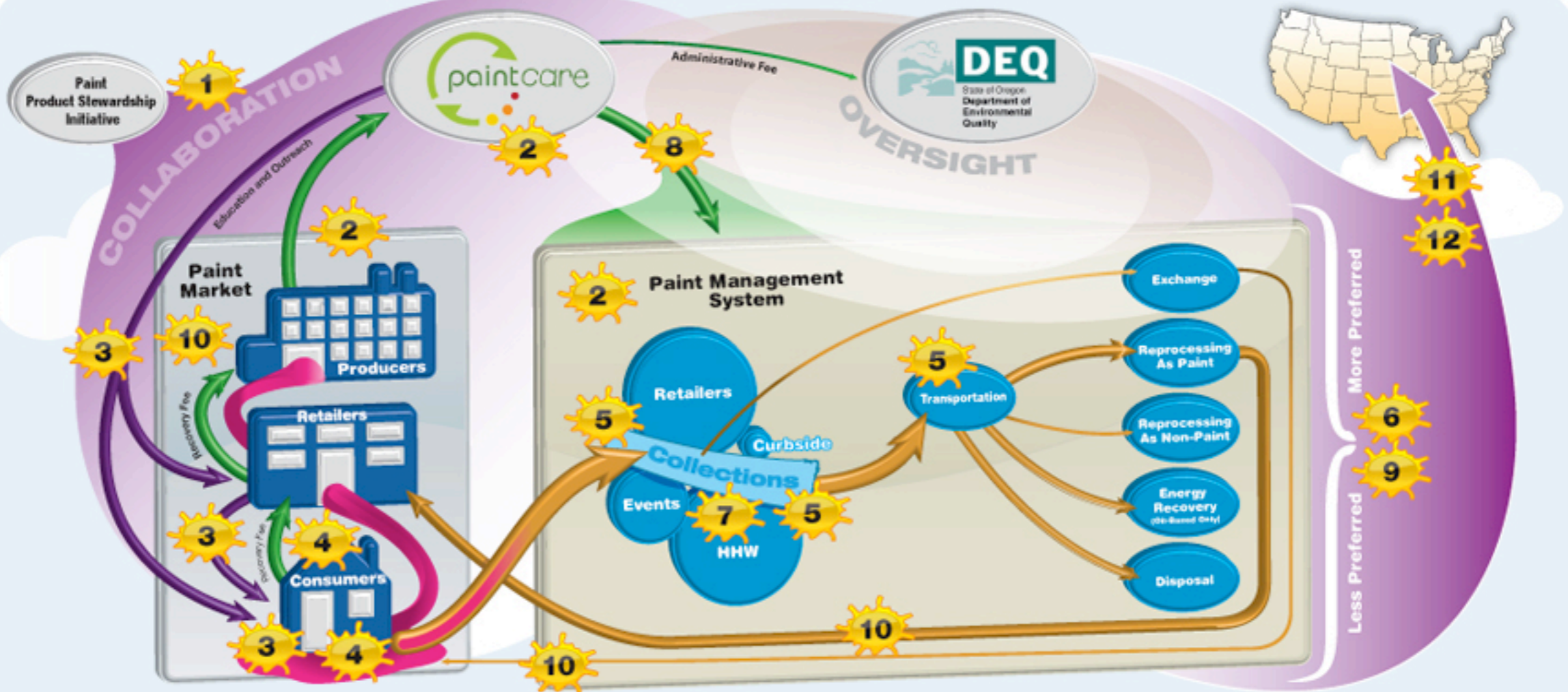
OR Paint Demonstration Program

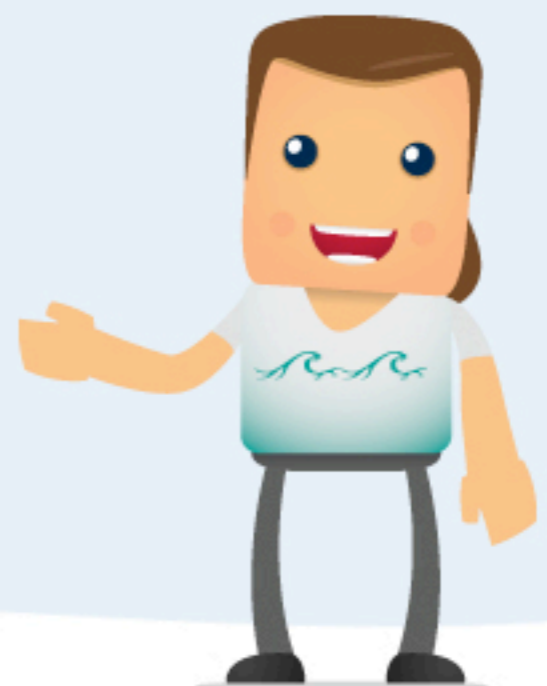
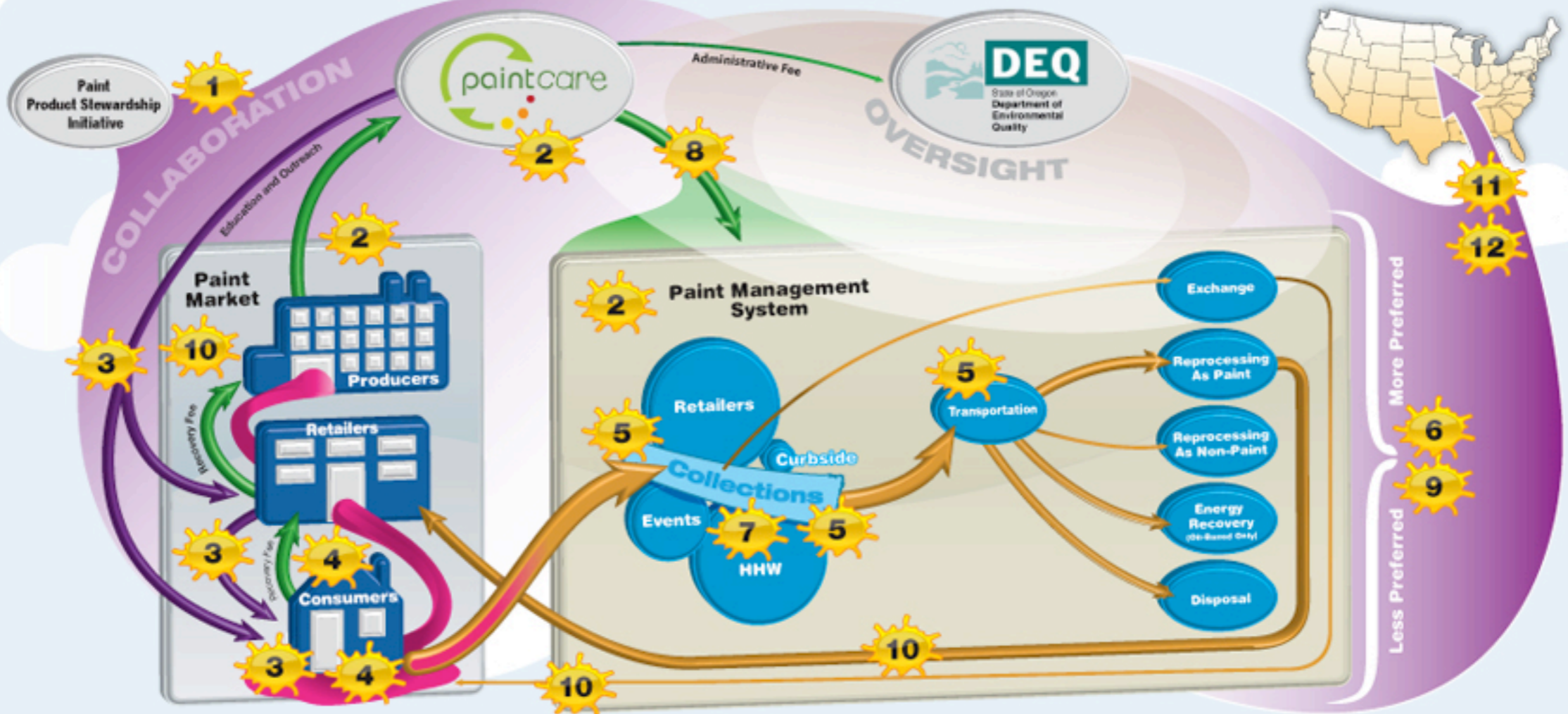


- ⇨ Flow of virgin paint
- ⇨ Flow of used/leftover paint
- Process
- Organization/group
- Flow of information
- Flow of Funds





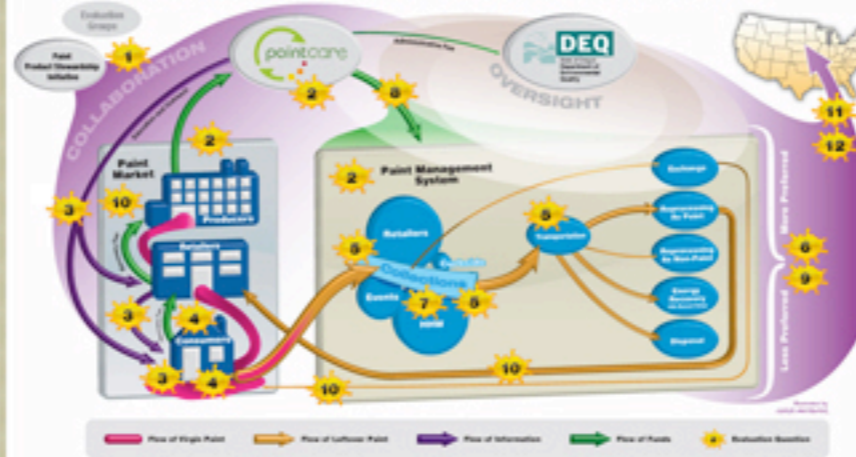




The Paint Product Stewardship Initiative Evaluation Committee presents the...

Oregon Paint Stewardship Pilot Program

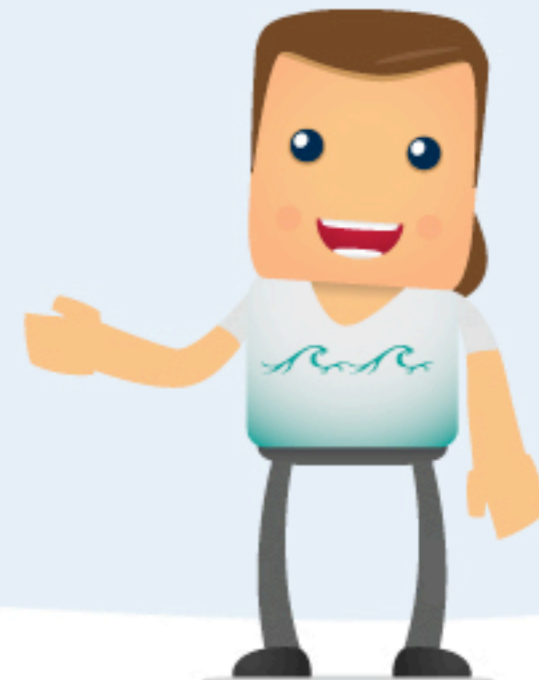
Explore the paint program and its evaluation committee's work by clicking various elements in the image below.



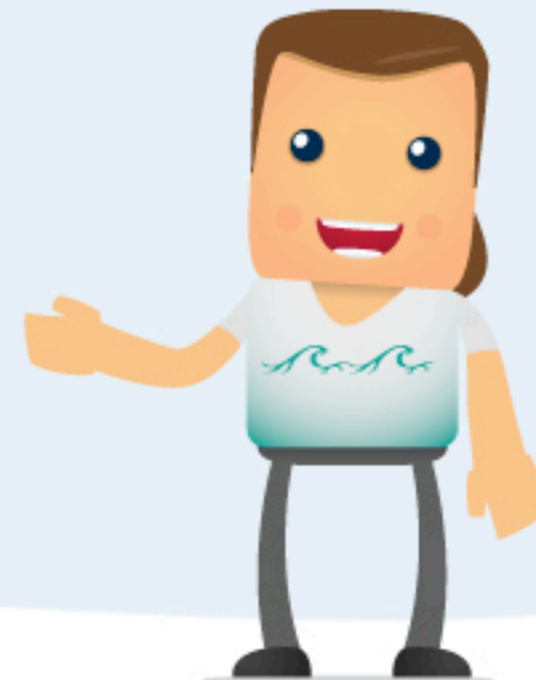
If you would like to comment or make suggestions related to the paint program or this graphic, please visit us on Facebook and join the conversation!

Additional Materials		
Title	Description	
1. PaintCare Awareness Study	A powerpoint presentation of the PaintCare Awareness Study	
2. Awareness Survey Response	A memo summarizing PaintCare and Bradshaw's response to the Committee's recommendations.	
3. PaintCare Awareness Survey of Oregon Homeowners - Report	The results of the August 2010 PaintCare Awareness Survey of Oregon Homeowners.	
4. PaintCare Awareness Survey of Oregon Homeowners - Results	The data collected from the August 2010 PaintCare Awareness Survey of Oregon Homeowners.	
5. PaintCare Awareness Survey of Oregon Residents	The results of the July 2011 PaintCare Awareness Survey of Oregon Residents.	
6. Method for Evaluating the Paint Product Stewardship Initiative's Oregon Pilot Program	The latest draft version of the evaluation methodology document.	
7. Integrating Evaluation into Program Design	A paper on integrating evaluation into design of a project.	
8. Integrating Evaluation into The Oregon Pilot Program	A one page fact sheet that condenses key points from the full paper on integrating evaluation.	
9. Importance of Collecting Baseline Data for the Oregon Paint Stewardship Program	A memo describing the importance of collecting baseline data.	
10. Oregon Paint Pilot and Environmental Impact	A memo summarizing issues of measuring environmental impact related to the OR pilot project.	
11. Laffey Oregon Pilot Project Evaluation: Prioritizing Evaluation Questions	A memo describing how the Committee prioritized the evaluation questions.	
12. Suggestions for Survey Sampling and Implementation	A memo describing the Evaluation Committee's recommendations for improving the draft Bradshaw survey instrument.	
13. Bradshaw Consumer Survey Instrument	The implemented version of the Bradshaw survey. (Also Appendix C of the Evaluation Methodology)	
14. Integrating Evaluation into the Design of the Minnesota Demonstration Project 2008	A powerpoint presentation discussing evaluation and design in the context of the MN project.	
15. Introduction to Evaluating the Minnesota Demonstration Program 2007	A powerpoint presentation providing an Introduction to evaluation in the context of the MN project.	
16. The Measurement and Evaluation of the PPS Oregon Pilot Program 2009	A powerpoint presentation discussing measurement and evaluation in the context of the OR Pilot project.	
17. Data Visualization and Convenience Analysis of the Oregon Paint Management Pilot Program	Hedrick Strickland's master's project proposal addressing the convenience of the OR Pilot program through data visualization.	
18. Convenience Analysis of the Oregon Paint Management Pilot Program	A powerpoint presentation by Hedrick Strickland discussing her master's thesis regarding the location convenience of the OR Pilot program collection facilities.	
19. Oregon Paint Stewardship Pilot Program - Interactive Figure Draft text, audio, or video scripts for figure components	The draft text of the pop-up boxes for the interactive figure, organized by diagram component.	
20. Graphics from the Iowa Department of Natural Resources	Describes the flow of paint and funds.	
21. Assessment of Collaboration of the Paint Product Stewardship Initiative (PPSI) Pilot Program	A powerpoint presentation PDF by Duke University graduate students discussing the assessment of collaboration of the OR Pilot program.	
22. Assessment of Collaboration of the Paint Product Stewardship Initiative (PPSI) and Pilot Program	Duke University graduate student's final report on collaboration.	
23. Interim Briefing 12-14-10	Handout for Evaluation Committee Call, December 2010.	
24. OR Paint Pilot Project Evaluation Interim Briefing Call Recording	Recording of December 2010 Evaluation Committee phone call.	
25. Description of the Oregon Pilot Program Paint Stewardship Organization	Final report from the Georgia State University graduate students regarding the description of the OR Pilot program.	
26. Development and Prioritization of the Evaluation Questions	Description of the Evaluation Committee's process to focus the scope of the evaluation. (Also Appendix A of the Evaluation Methodology)	
27. PPSI Paint Demonstration Project Draft Work Plan	Document developed to inform the design of a paint management system in Minnesota. (Also Appendix B of the Evaluation Methodology)	
28. Alternative Consumer Survey	Suggested Evaluation Team questions for a consumer survey. (Also Appendix D of the Evaluation Methodology)	
29. Analysis of Data Sources for Evaluation Questions 3 and 4	Identification of potential data sources for answering evaluation questions related to consumers. (Also Appendix E of the Evaluation Methodology)	
30. 2011-2012 Oregon Paint Stewardship Pilot Program Annual Report	PaintCare's first annual report delivered to Oregon Department of Environmental Quality.	
31. Paint Product Stewardship Pilot Program Annual Report Appendix	Appendices from PaintCare's first annual report.	
32. PPSI Evaluation Committee Webinar 09-23-11 (Coming Soon)	Recording of the Evaluation Team's presentation of its evaluation of the OR pilot program.	

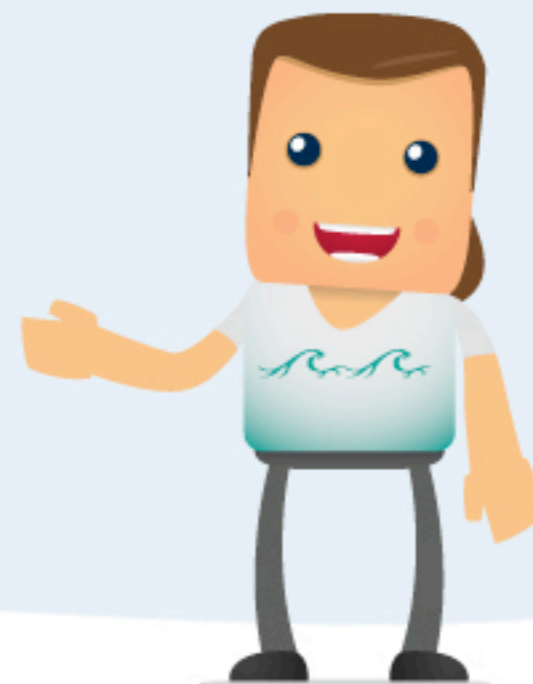
Navigate Complexity



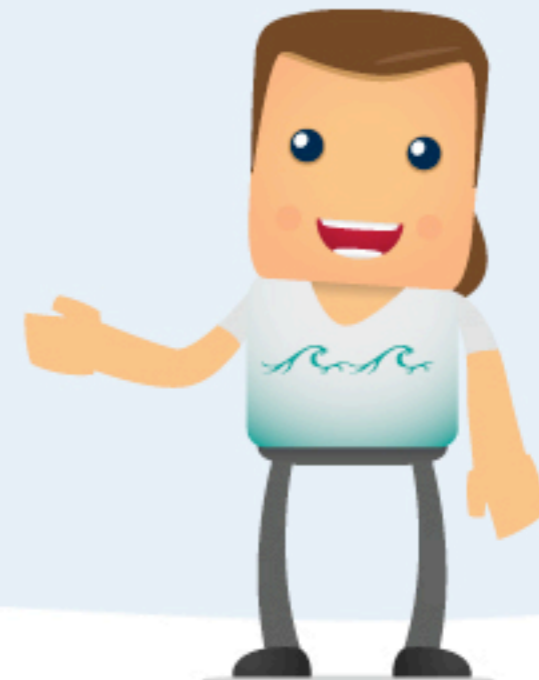
Representational to Processual



Theory



Conclusion



Contact us



Matt Keene
Evaluation Support Division

- United States Environmental Protection Agency
- Environmental Evaluators Network

keene.matt@epa.gov
Twitter: EnviroEvalNet
Skype: mwkeene
office: (202) 566-2240



Chris Metzner
Freelance Graphic Designer

Subscribe to my blog:
www.ChrisMetzner.com

chris@chrismetzner.com
(904) 885-0489

Twitter: chrismetzner
Facebook, LinkedIn, etc...



www.PaintStewardshipProgram.com
www.EnvironmentalEvaluators.net

